

EPIPHANY OF OUR LORD PARISH

Served by the Congregation of the Sons of Immaculate Conception



3200 Pharmacy Avenue,
Scarborough, Ontario M1W 3J5

Phone: 416-499-2196

Fax: 416-499-2354

Email: epiphanyofourlordsc@archtoronto.org

Website: epiphanyofourlordsc.archtoronto.org

APRIL 9TH, 2023

EASTER SUNDAY

PASTOR

Rev. Martin Cherumadathy, CFIC

ASSOCIATE PASTOR

Rev. Ronald Gene Generao, CFIC

DEACON ASSISTANT

Deacon Valentinus Danukarjanto

Office Secretary

Kim Miranda

Caretaker

Peyman Amini

Bible Study (Online)

Monday at 7:00 p.m.

Divine Mercy Chaplet

Friday 3:00 p.m.

One Hour With Jesus

Every last Tuesdays
after the 7:00 p.m. Mass

Holy Hour of

Eucharistic Adoration

Every first Fridays
after the 7:00 p.m. Mass

Our Lady of

Perpetual Help Novena

Saturday after the 8:00 a.m. Mass

Holy Rosary

Monday to Saturday
after the 8:00 a.m. Mass

Holy Rosary Online

Every first Saturdays
for 24 hours from 9:00 a.m.
Saturday to 9:00 a.m. Sunday.
Call Joseph at 647-987-4762
to join.

Communion For The Sick

Please call or email
the Parish office.

Daily Mass Schedules

Monday to Saturday 8:00 a.m.

Tuesday & Thursday 7:00 p.m.

Wednesday 7:00 p.m. *Italian*

Friday 7:00 p.m. *English & Italian*

First Friday Mass* 12:10 p.m.

Sunday Mass Schedules

Saturday 5:00 p.m.

Sunday 9:00 a.m., 1:00 p.m., 7:00 p.m.
11:00 a.m. *Italian*

Adoration Chapel

Monday 6:30 a.m. to 7:45 a.m.

8:30 a.m. to 12:00 p.m.

Tuesday to Friday 6:30 a.m. to 7:45 a.m.

8:30 a.m. to 5:00 p.m.

Saturday 6:30 a.m. to 7:45 a.m.

Reconciliation

First Friday 6:30 a.m. to 7:30 a.m.

Saturday 4:30 p.m. to 5:00 p.m.

Other Days - By appointment only

Office Hours

Monday 9:00 a.m. to 12:00 p.m.

Tuesday to Friday 9:30 a.m. to 4:30 p.m.
(closed for lunch from 12:00 to 1:00 p.m.)

Parish Schools

Epiphany of Our Lord C.A. 416-393-5378

St. Henry C. S. 416-393-5395

St. Kateri Tekakwitha C. S. 416-393-5393

Mary Ward C. S. S. 416-393-5544

ALTAR SERVERS

Anna & Silvio Longo 905-472-8581

BASIC CHRISTIAN COMMUNITIES

Stefano Priore 905-313-8267

BIBLE STUDY (Online)

Craig Robichaud 416-432-5072

CHARISMATIC PRAYER GROUPS

Savio Rodriguez 647-786-9034

(Ital.) Felina Pantaleo 416-498-6420

(Eng.) Janice Colligan 416-886-1519

CHILDREN'S LITURGY OF THE WORD

Janice Colligan ... 416-886-1519

COMMITTEE OF ITALIAN MEN & WOMEN

Renato Baldari 416-491-2189

Felina Pantaleo 416-498-6420

COUNTERS

Calvin Clarke 416-495-6937

Fernando Aceto 416-499-2196

COUPLES FOR CHRIST

Norman/Marissa Tapangco. 647-341-3689

EUCCHARISTIC MINISTRIES

(Eng.) Freddy Printer 647-633-0494

(Ital.) Renato Baldari 416-491-2189

FAMILY & LIFE MINISTRY

Jose Lee 647-978-5948

Florie Lee 416-557-1036

HOSPITALITY (USHERS)

Calvin Clarke 416-495-6937

Salvatore Messina 416-917-5614

KNIGHTS OF COLUMBUS

(Ave Maria Council 9494)

Joaquim (Ross) D'Souza ... 647-639-1587

LECTORS

(Eng.) Mark Novis 416-578-5457

(Ital.) Felina Pantaleo 416-498-6420

LEGION OF MARY

Jane Pais 416-849-6465

MARRIAGE PREPARATION

Jose & Florie Lee 647-978-5948

MUSIC MINISTRY

Edie Di Pede 416-499-8396

Emy De Asis 905-305-6896

Frank/Grace Carrubba. 905-591-0875

Daryl Timmins 416-292-2317

Noel Dabbagh 416-499-2196

Eddie Shiu 647-969-7131

OUTREACH

Samantha Connelly 647-892-6713

R.C.I.A.

Wies Danukarjanto 416-499-2196

SHARELIFE

Edie Di Pede 416-499-8396

ST. VINCENT DE PAUL SOCIETY

Mary Huan 416-410-5655

STEWARDSHIP

Gino Di Pede 416-499-8396

SOCCER LEAGUE

Mario Cuzzolino 416-720-2597

WOMEN'S SPIRITUALITY GROUP

Maria Sivilla 416-894-4859

YOUTH MINISTRY

Chico Nuguid 647-286-5831

“This is the day the Lord has made. Let us rejoice and be glad.”

BIBLE STUDY GROUP



In observance of Easter Monday, the online Bible Study Group is cancelled on April 10, and will resume on Monday, April 17.

PRE-AUTHORIZED GIVING



PAG/Pre-Authorized Giving Program is a pre-authorized bank withdrawal program offered to parishioners for church donations while continue using your offertory envelopes to donate. Please call the Parish office for information and registering for this program.

PAG/Pre-Authorized Giving Program è un programma di prelievo bancario pre-autorizzato offerto ai parrocchiani per le donazioni della chiesa mentre continuano a utilizzare le buste dell'offertorio per donare. Si prega di chiamare l'ufficio parrocchiale per informazioni e per

ShareLife

ShareLife Parish Goal: \$73,000.00
Donation-To-Date: \$15,470.87

Show Your Love By Giving To ShareLife. Jesus' love for us invites us to give to others, especially those most in need. ShareLife agencies continue to support the most vulnerable in our community through services that are only possible through your kind and generous donations. Please give at the parish using a ShareLife envelope, or online through sharelife.org/donate.

Mostra il tuo amore donando a ShareLife.

L'amore che Gesù ha per noi ci invita a donare al prossimo e in modo particolare ai bisognosi. Le agenzie di ShareLife continuano ad assistere i più bisognosi della collettività attraverso servizi resi possibili solo dalla tua generosa e premurosa donazione. Per favore dona in parrocchia usando la busta di ShareLife, oppure online tramite sharelife.org/donate.



Please pray for the repose of the soul of
† **MARIA GIOVANNA MONACO**
Eternal rest grant unto her, O Lord; and let perpetual light shine upon her. May she rest in peace. Amen.

BAPTISM CELEBRATION



Please join us in welcoming
Estrella Lukaso
Kayden Tao Weng
Inioluwa Elizabeth Kolawole
Oluwadunmininu Ifeoluwa Asabi
Oluwatunmise Olayinka Asabi
Olufunminiyi Olawale Asabi
into our Catholic community by the Sacrament of Holy Baptism.
Congratulations to the Parents & Godparents.

MONTHLY FOOD DRIVE RESUMES: APRIL 15 TO 30

When Every Donation Makes A Difference



Please drop-off your donation of non-perishable food in the Food Drive bin provided at the front foyer to share with the less fortunate in our community during this period. Please check the expiry dates of your donation. Thank you.
Vi preghiamo di deporre il vostro contributo nel cestino che troverete nell'atrio della chiesa. Si prega di controllare la scadenza dei cibi in scatola. Grazie.



Read a portion of one of the Gospels every day

It might perhaps be the Gospel reading for the Mass of the day, or it might simply be a chapter a day. Each chapter takes only a few minutes to read prayerfully, so as to encounter Jesus, and to experience the love of his Sacred Heart.

“Questo è il giorno che ha fatto il Signore. Ralleghiamoci e ralleghiamoci.”



*We Wish You All A Blessed
& Happy Easter!
From: Fr. Martin, Fr. Ronald,
Deacon Val & Parish Staff
Auguriamo A Tutti Una Santa
e Felice Pasqua!
Da: Padre Martin, Padre Ronald,
Diacono Val e da tutto il personale
della nostra Parrocchia*



DIVINE MERCY NOVENA

Day 3: Easter Sunday, April 9
After 1:00 p.m. Mass

Day 4: Easter Monday, April 10 - 7:30 p.m.

Day 5: Tuesday, April 11 - 7:30 p.m.

Day 6: Wednesday, April 12 - 7:30 p.m.

Day 7: Thursday, April 13 - 7:30 p.m.

Day 8: Friday, April 14 - 7:30 p.m.

Day 9: Saturday, April 15 - 1:30 p.m.

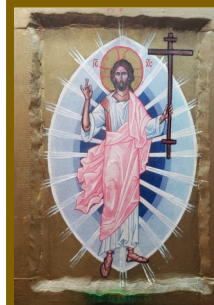
Divine Mercy Sunday, April 16, after the 1:00 p.m. Mass

One Hour of Eucharistic Adoration (Divine Mercy Chaplet at 3:00 p.m.)

CELEBRATING THE SACRAMENT
OF INITIATION - BAPTISM,
CONFIRMATION & EUCHARIST

Becoming Catholic
RCIA
Rite of Christian Initiation of Adults

Adeola Elizabeth Kolawole
Hélène Shako Lukaso
Xiao Xiong(Edward) Weng
Ying(Yolanda)He
Adeola Abosede Asabi



ADVISORY!!

**Monday, April 10,
is Easter Monday.
The Church will be closed
after the 8:00 a.m. Mass.
No Adoration on this day.**

FREE SUBSCRIPTION TO FORMED

Epiphany Parish has subscribed to **FORMED** which is a Catholic online site with over 4,000 Catholic movies, studies, audio dramas, talks, e-books for families and kids to provide our parishioners free access to all these. **Register for FREE** at <https://signup.formed.org/> and enter our parish's postal code/address, your name and email address.

CHILDREN'S LITURGY OF THE WORD



Sundays, 9:00 a.m. & 1:00 p.m.
Children ages 5 to 12 are welcome to participate in the Liturgy of the Word at the Little Children's Chapel after the Opening Prayers and return back into the Church at the Offertory.

VOLUNTEERS NEEDED! To volunteer for the Children's Liturgy, call Janice at 416-886-1519.

“This is the day the Lord has made. Let us rejoice and be glad.”



Please take more time to be in communion with God by visiting www.masstimes.org for a list of Catholic Churches if you will be spending your days elsewhere.

Per favore, prendete più tempo per essere con Dio visitando www.masstimes.org per un elenco delle Chiese cattoliche che offrono Santa Messa.

For Parish updates and announcements, please visit and subscribe to our website at epiphanyofourlordsc.archtoronto.org

SVDP BUNDLE-UP COLLECTION, APR. 22/23



Please do not bring any items to the church before the above dates.

On the weekend of April 22/23, please bring your gently-used clothing and household items to share with those less fortunate before or after all Masses. Textiles, shoes, clothing, beddings, draperies and small household goods are most welcome. Tie donation bags securely. **NOT ACCEPTED ARE: appliances, baby furniture, books, mattresses, dishes, construction materials and video tapes.**

Collezione Bundle SVDP, 22/23 aprile

Si prega di non portare oggetti in chiesa prima delle date sopra indicate.

*Il 22 e 23 aprile, porta i tuoi vestiti e oggetti domestici usati con delicatezza da condividere con i meno fortunati prima o dopo tutte le messe. Tessili, scarpe, abbigliamento, biancheria da letto, tendaggi e piccoli articoli per la casa sono i benvenuti. Lega i sacchetti per le donazioni in modo sicuro. **La Collezione Bundle-up non accetta: elettrodomestici, mobili per bambini, libri, materassi, stoviglie, materiali da costruzione e videocassette.***

DEVOTIONS AT OUR PARISH



Chaplet of Divine Mercy - Fridays, 3:00 p.m.

Novena to Our Lady of Perpetual Help - Saturdays, 8:30 a.m., after the 8:00 a.m. Mass

Praying of the Holy Rosary - Mondays to Saturdays, after the 8:00 a.m. Mass



PARISH REGISTRATION FORM

Date MMM-DD-YYYY New Parishioner Change of Information Moving to New Address

Primary / Head of Household

Mr. Mrs. Miss Last Name _____ First Name _____
Street Address _____ Apt./Unit # _____ City _____ Postal Code _____
Cell # _____ Home # _____ Email _____

SPOUSE N/A

Mr. Mrs. Miss Last Name _____ First Name _____

How do you wish to support the parish?

- Pre-Authorized Giving (**PAG**). Automatic withdrawal from your account every 20th of each month.
 Pre-numbered envelope. Please choose this option if you wish to contribute for the Sunday Offerings.
 Include both spouse names on tax receipt? **YES / NO**